

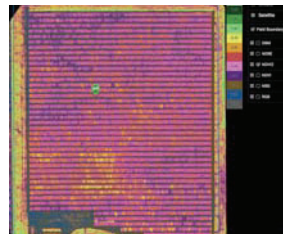
Draganflyer Commander Ag-Pro Equipment List

- (1) Rugged transport case
- (1) Draganflyer Commander airframe
- (1) Quick release fixed vibration damping mount
- (1) MicaSense RedEdge-MX Multispectral Sensor
 - Capture rate: 1 capture/second (all bands) 12-bit RAW
 - FOV: 47.2 Degrees HFOV
 - GSD: 8cm/pixel/band @400'AGL
 - Spectral Bands: Blue, green, red, red edge, near IR (global shutter, narrowband)
- (1) Handheld controller
 - With integrated touchscreen for system setup and calibration
- (2) 6750mAh DraganFuel HV flight batteries
- (6) Quick release props (2 spare)
- (1) Single port Lithium Ion battery charger
- (1) Draganfly Surveyor flight software
 - Windows tablet or laptop is required but not included with this package
- (1) Set of accessories
 - (1) Aircraft tool kit
- (1) USB with all documentation
 - Pre-flight checklist
 - Post-flight checklist
 - Emergency procedures
 - Maintenance schedule
 - Equipment manuals
 - Pilot log book
 - System log book

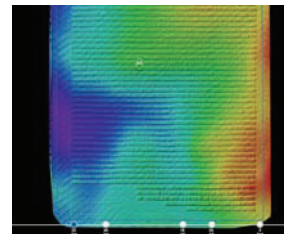


Pictured with MicaSense RedEdge MX Multispectral Payload

Compelling Use Cases:



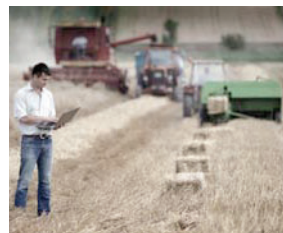
Crop Health Assessment



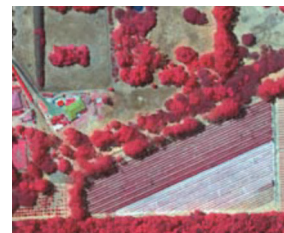
Digital Surface Modeling



Monitor Irrigation



Improve Yields



CIR Composite Analysis



NDVI Analysis

Technical Specifications

- Maximum Takeoff Weight:** 3.75kg (8.3lbs)
- Maximum Payload:** 1.0kg (2.2lbs)
- Maximum Speed:** 50km/h (31mph)
- Max Flight Time w/Payload:** 28 minutes
- Max Operating Range:** Visual Line of Sight
- Controller Range:** North America 2km
- Controller Range:** International 1km
- Operating Temp:** -24C (-13F) to +38C (100.4F)
- Maximum Wind Speed:** 35km/h (22mph)

Please note: Post processing software is not included. Software to consider is Pix4D Mapper or MicaSense Atlas.

