

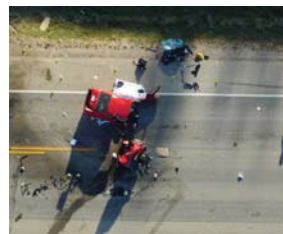
Draganflyer Commander Mapping Equipment List

- (1) Rugged transport case
- (1) Draganflyer Commander airframe
- (1) Quick release 2-axis stabilized mount
- (1) Sony RX100 Camera
 - 20mp 1" sensor, 3.6x optical zoom color camera
- (1) Handheld controller
 - With integrated touchscreen for system setup and calibration.
- (1) Live video viewing tablet
- (1) Draganfly IP base station and stand
 - Includes mini tripod and one 1350mAh battery
- (2) 6750mAh DraganFuel HV flight batteries
- (6) Quick release props (2 spare)
- (1) Single port Lithium Ion battery charger
- (1) Draganfly Surveyor flight software
 - Windows tablet or laptop is required but not included with this package
- (1) Pix4D Mapper perpetual license
 - One device
 - Includes Pix4D Cloud
- (1) Set of accessories
 - (1) Aircraft tool kit
- (1) USB with all documentation
 - Pre-flight checklist
 - Post-flight checklist
 - Emergency procedures
 - Maintenance schedule
 - Equipment manuals
 - Pilot log book
 - System log book

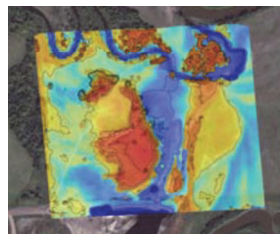


Pictured with QX100 Payload

Compelling Use Cases:



Accident Reconstruction



DSM with Contour Lines



Roof Inspection



Real Estate



3D Modeling and Mapping



Inventory & Waste Calculations

Technical Specifications

Maximum Takeoff Weight: 3.75kg (8.3lbs)

Maximum Payload: 1.0kg (2.2lbs)

Maximum Speed: 50km/h (31mph)

Max Flight Time w/Payload: 32 minutes

Max Operating Range: Visual Line of Sight

Controller Range: North America 2km

Controller Range: International 1km

Operating Temp: -24C (-13F) to +38C (100.4F)

Maximum Wind Speed: 35km/h (22mph)



MEASURE FROM IMAGES

Pix4D utilizes 2D images to produce highly precise, geo-referenced maps, mosaics, and 3D models.

Record, document, and calculate situations quickly, accurately, and non-invasively.

Export deliverables in 23 file formats compatible with CAD and GIS software.



Phone: [1-306-955-9907](tel:1-306-955-9907)

Online: www.draganfly.com e-mail: sales@draganfly.com

<https://www.draganfly.com>